

---

# 2008 Grower Survey

**Horst Caspari**  
**Colorado State University**  
**Western Colorado Research Center**  
**Grand Junction, CO 81503**  
**Ph: (970) 434-3264**

# Survey summary

---

Survey forms sent	179
Survey forms returned	107
Commercial growers	105
Mail undelivered	0
Not a commercial grower	2
Rate of return	59 %

# Non-respondents: established growers

---

40 growers who provided data in previous surveys did not respond to the 2008 survey

- 159 total acres (~15-20 % of CO total)
- 159 producing acres

Another ~20 growers have not replied to any of the surveys since 2000.

# Definition

---

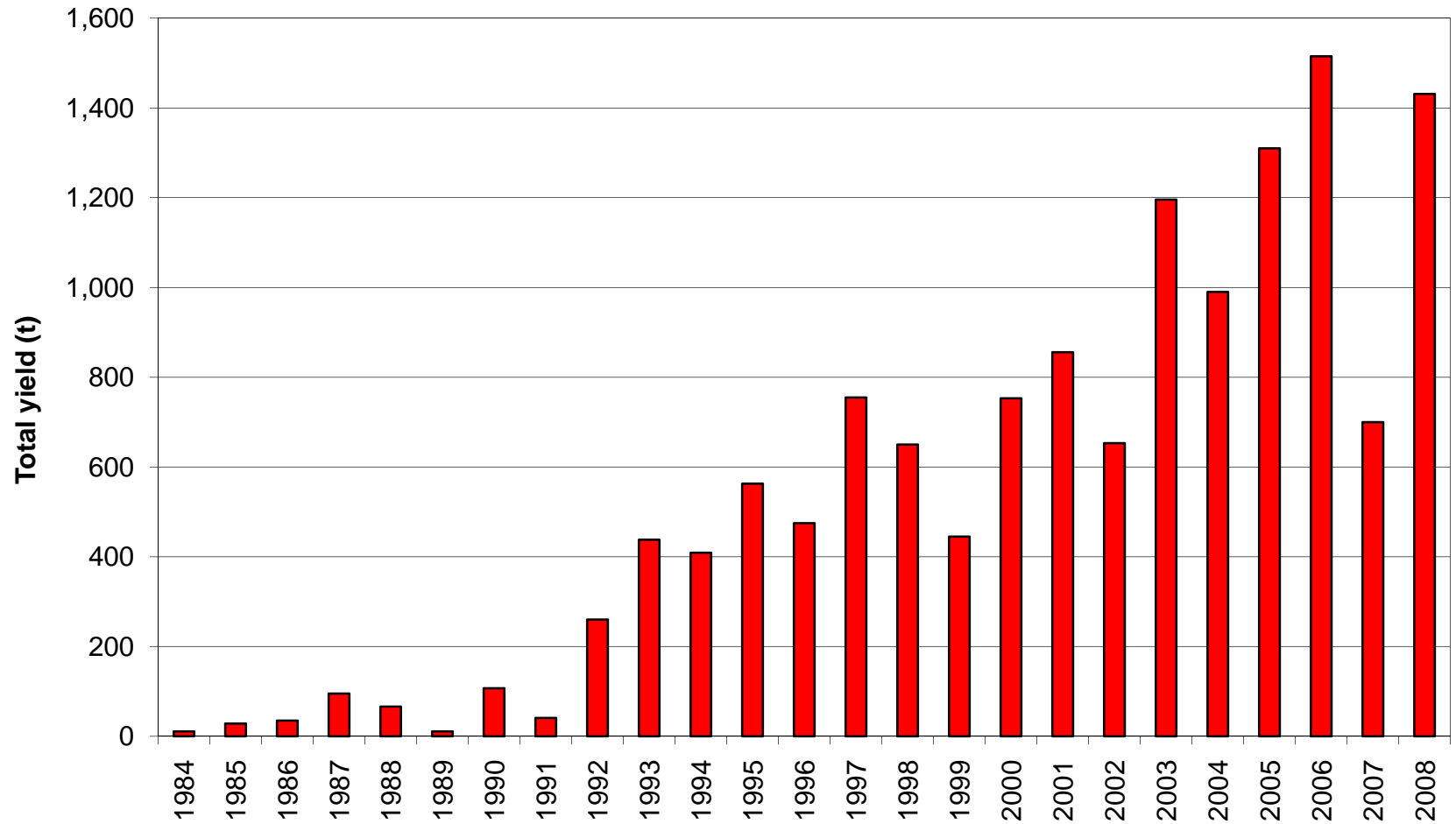
“Producing area”

- vineyards that were planted prior to 2007

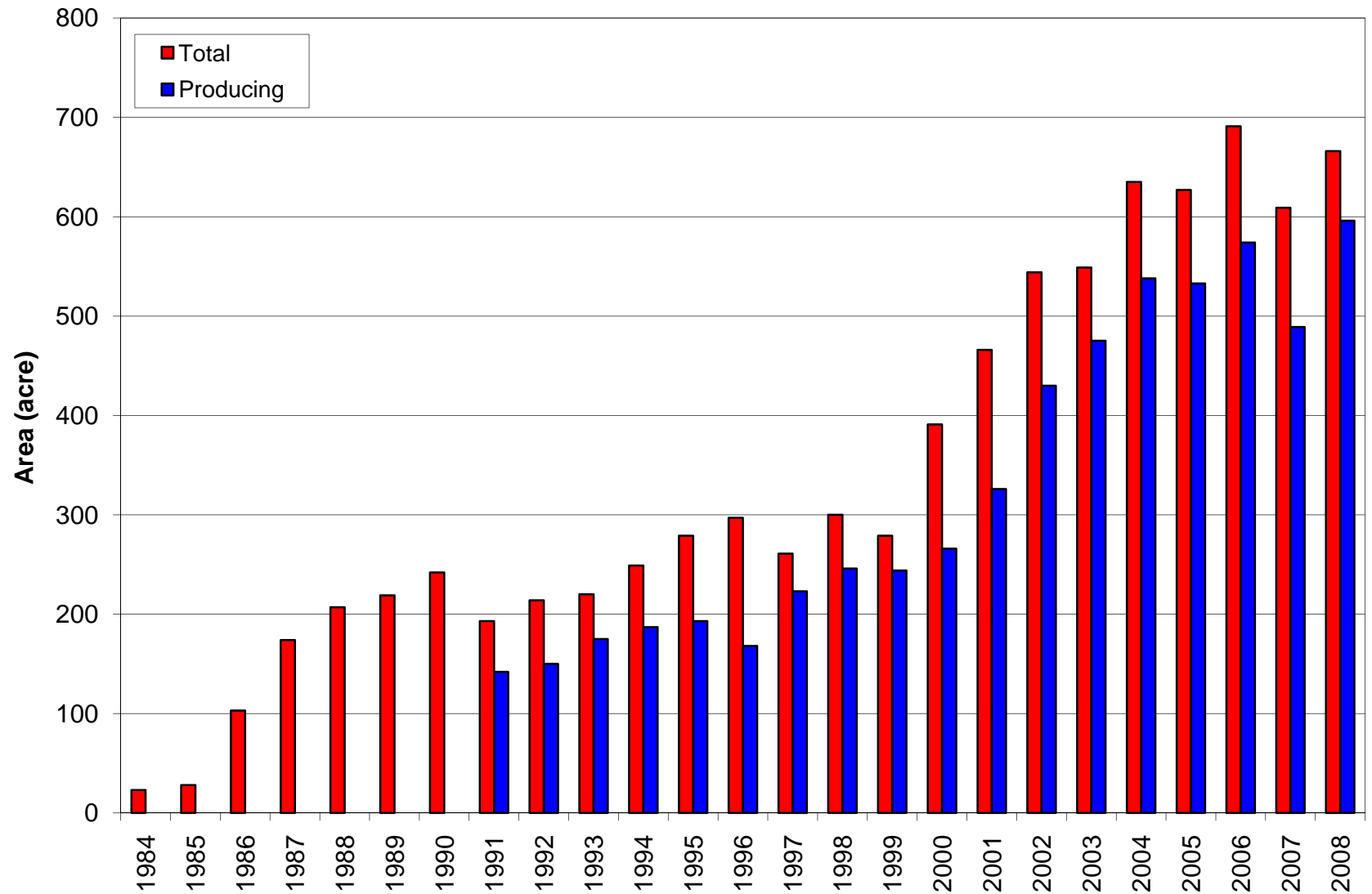
# 2008 Survey results

Total vineyard area (acre)	666
Wineries	178 (27 %)
Contract growers	488 (73 %)
Producing vineyard area (acre)	596
Wineries	175 (29 %)
Contract growers	421 (71 %)
Average vineyard size (acre)	6.3
Total production (t)	1,431
Average yield (t/acre)	2.4
Average grape price (\$/t)	1,327
Average picking costs (\$/t)	207
Gross return (\$/acre)	4,022

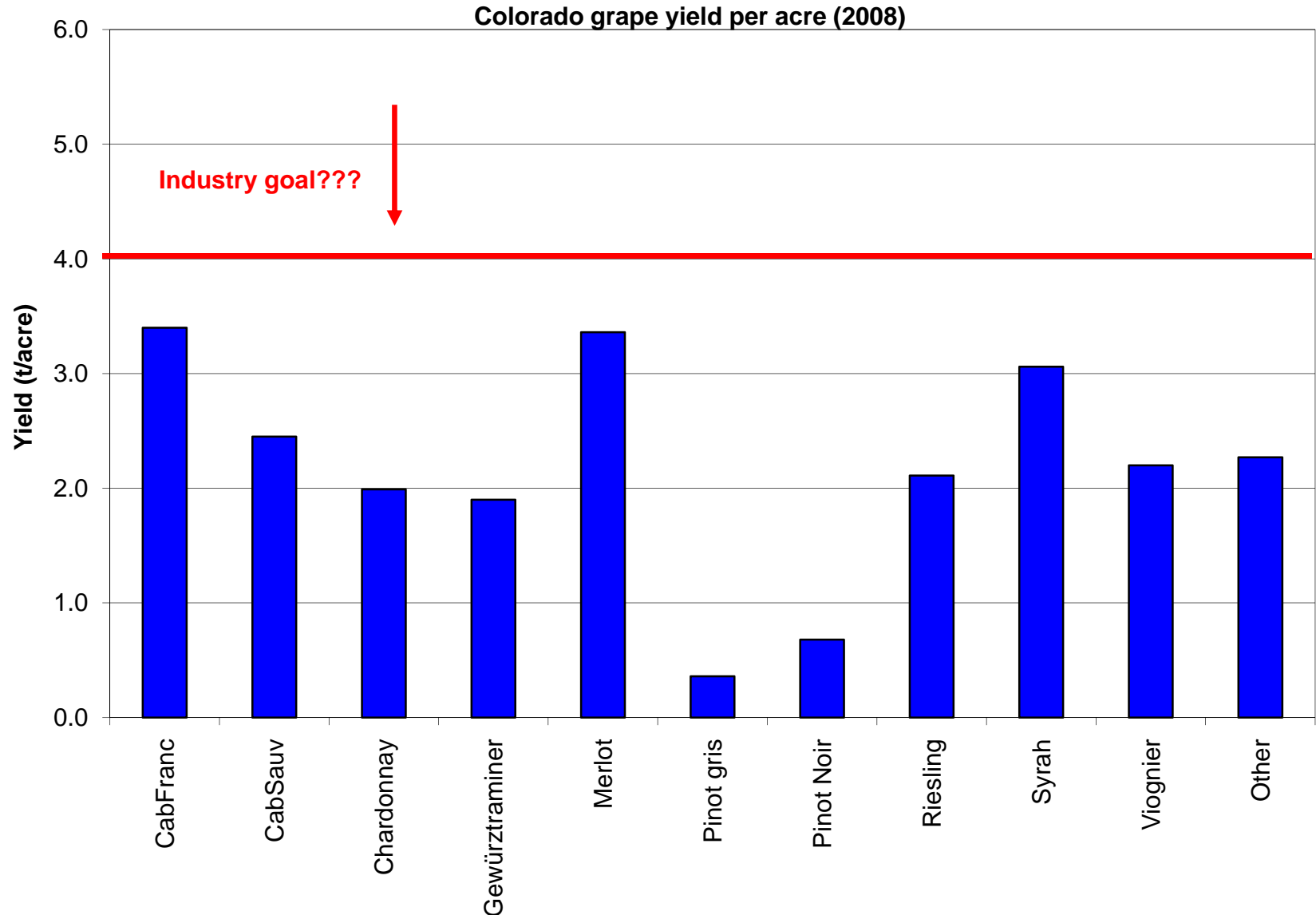
# Colorado grape production by year



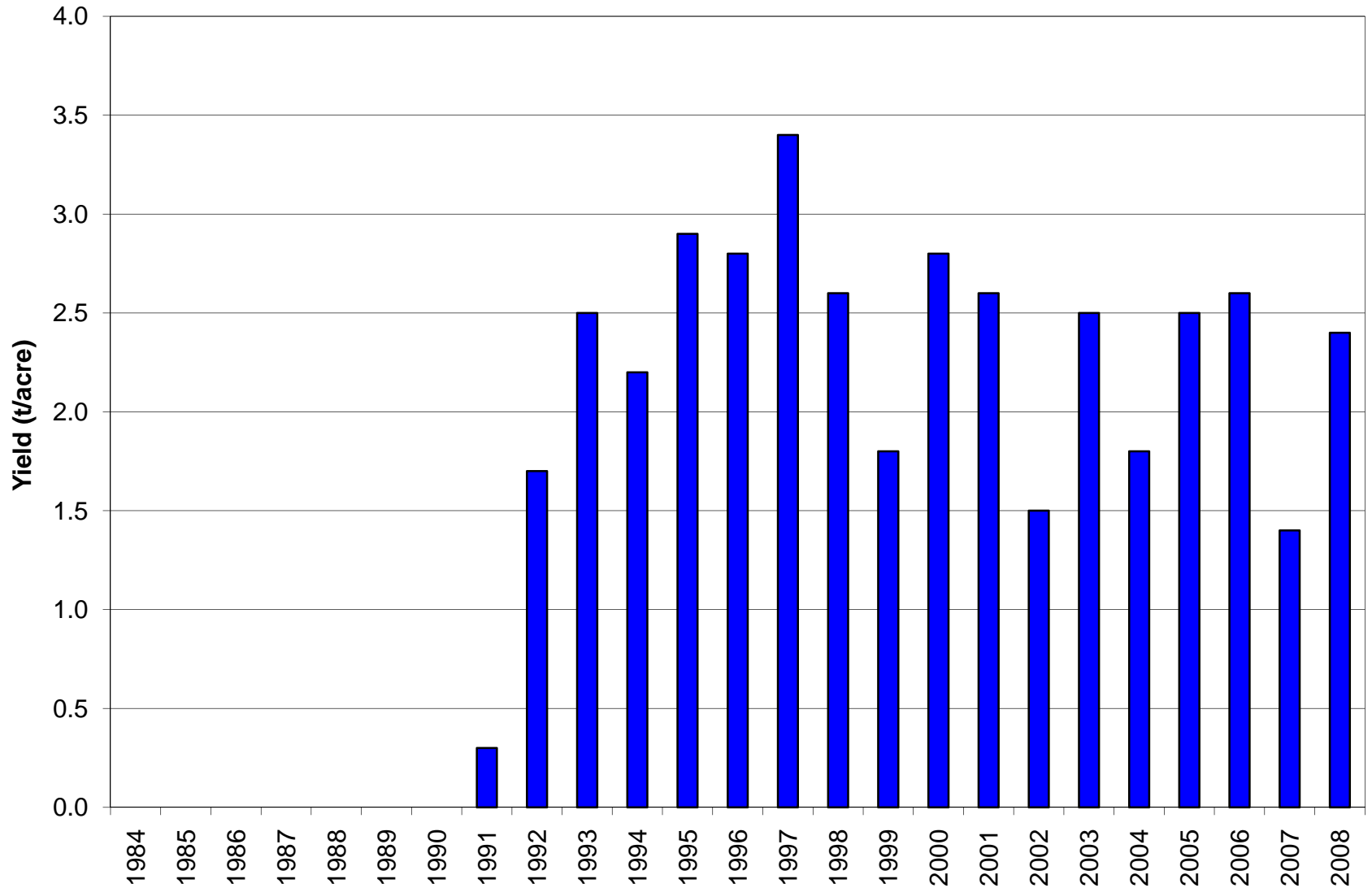
# Colorado grape growing area by year



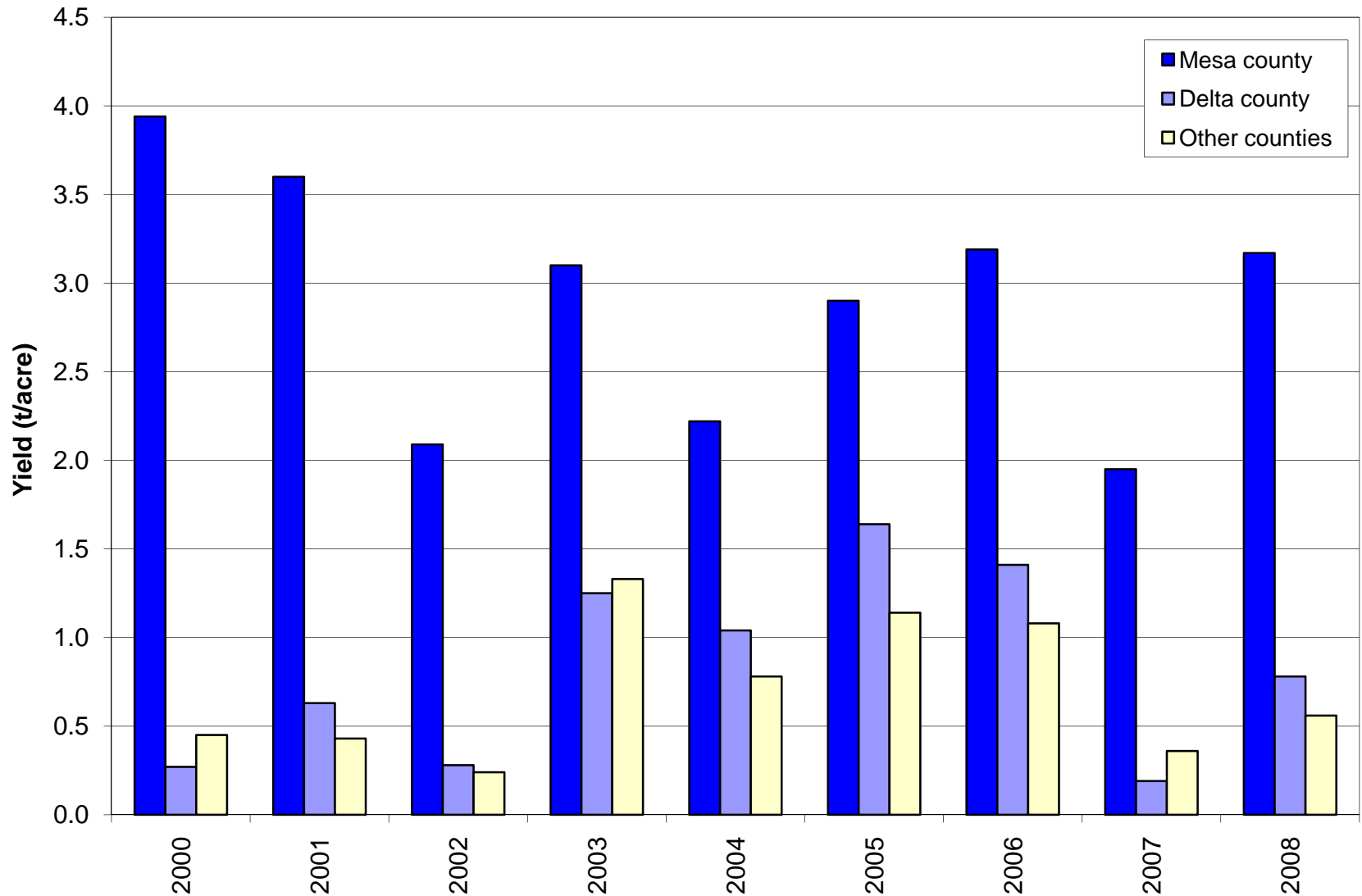
# Colorado grape yield per acre by variety



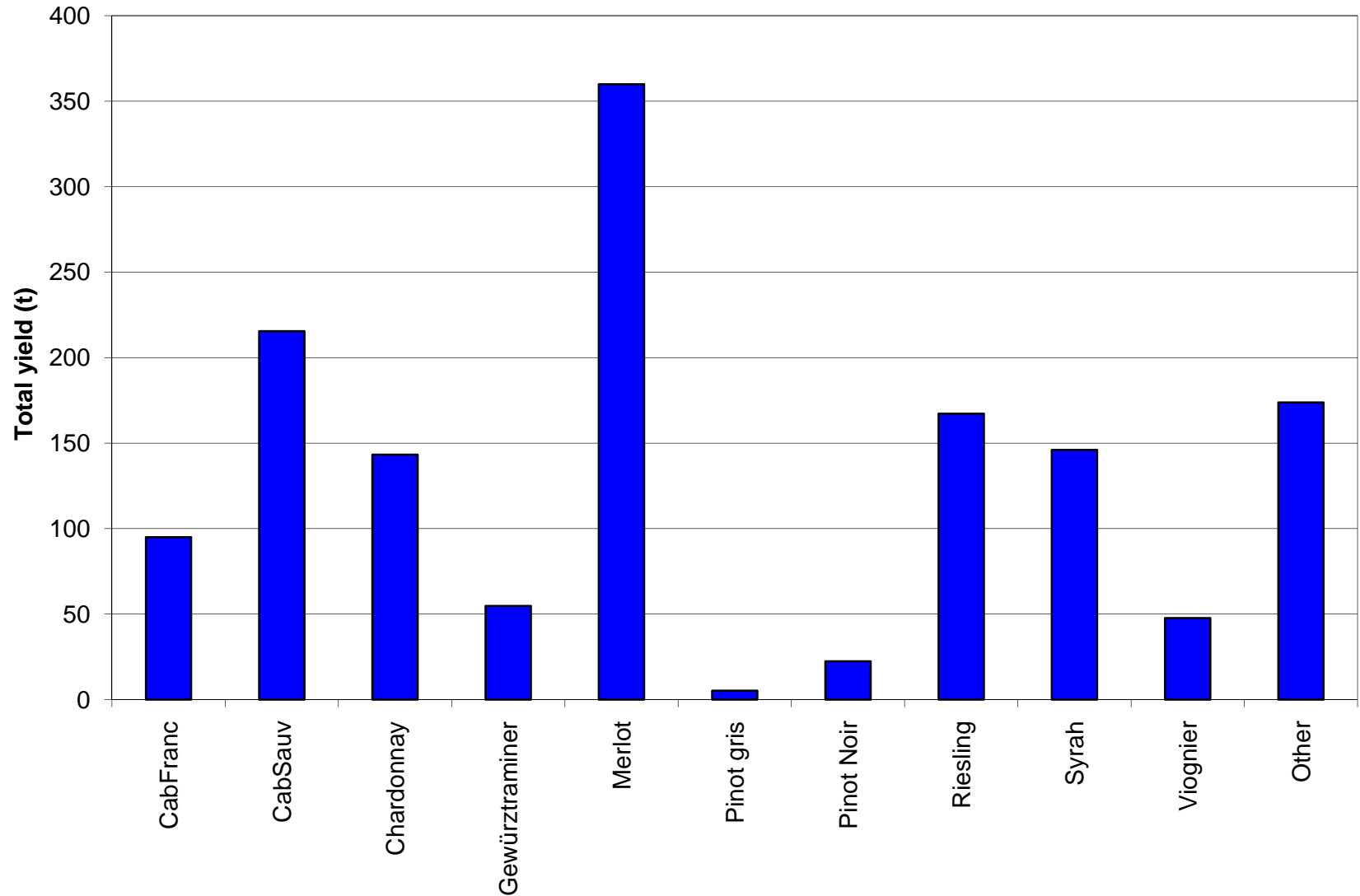
# Colorado grape yield per acre by year



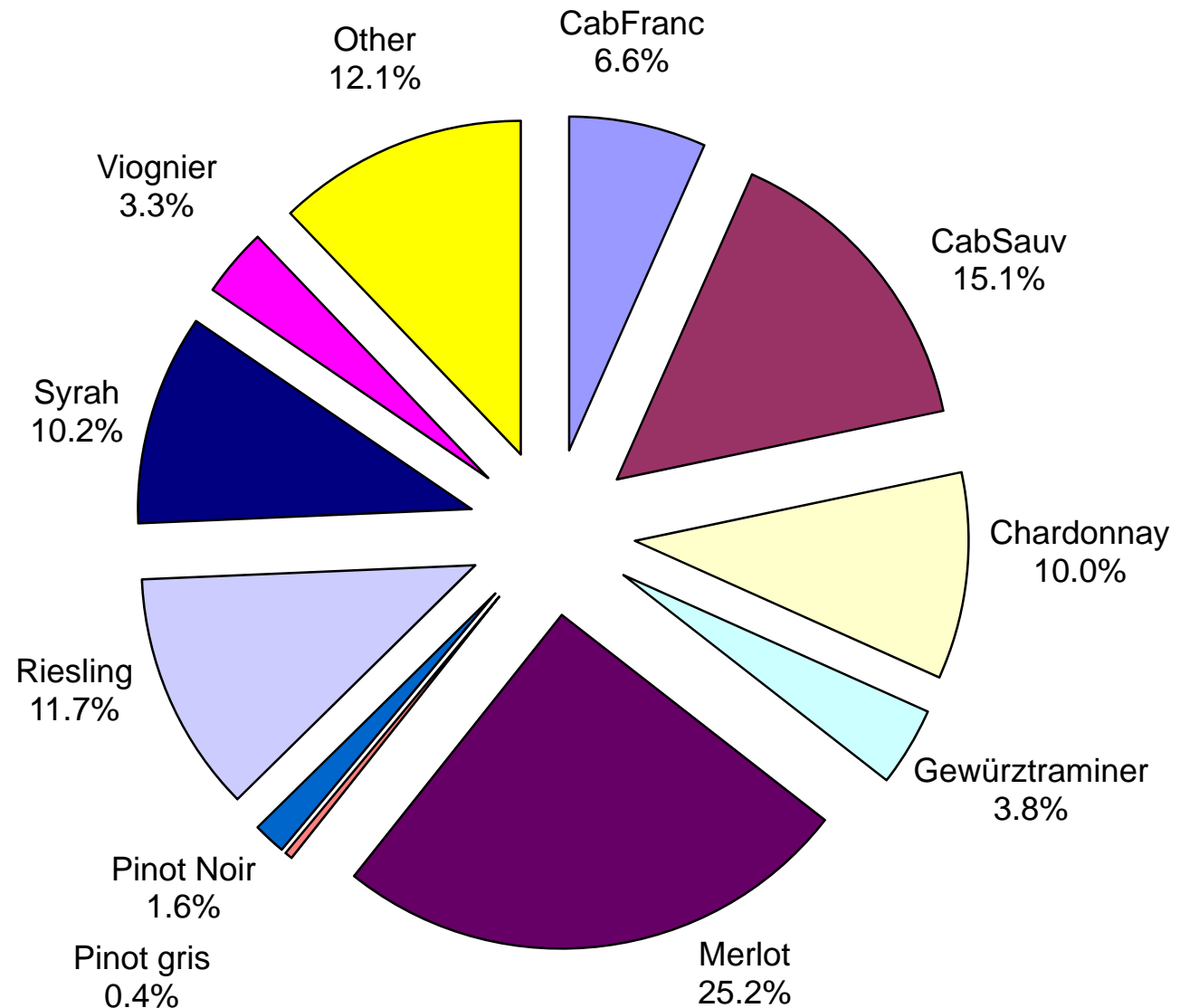
# Colorado grape yield per acre by county



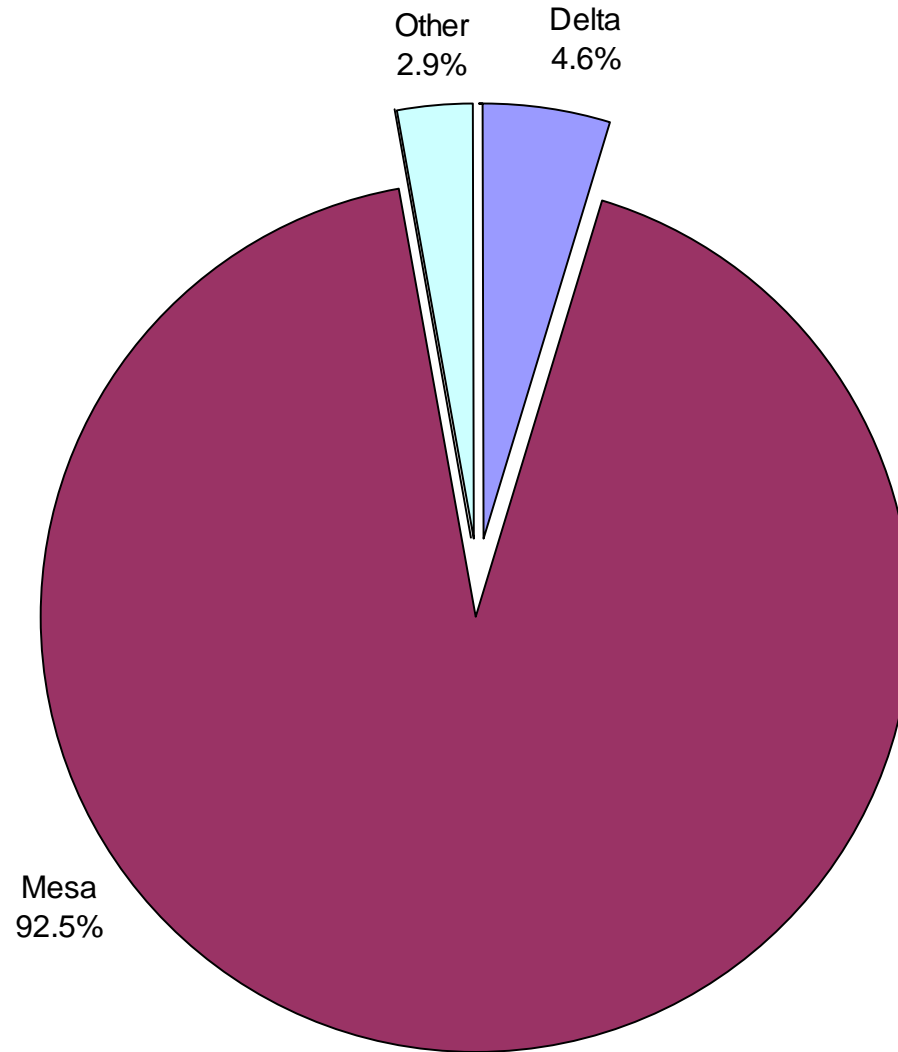
# Colorado grape production by variety



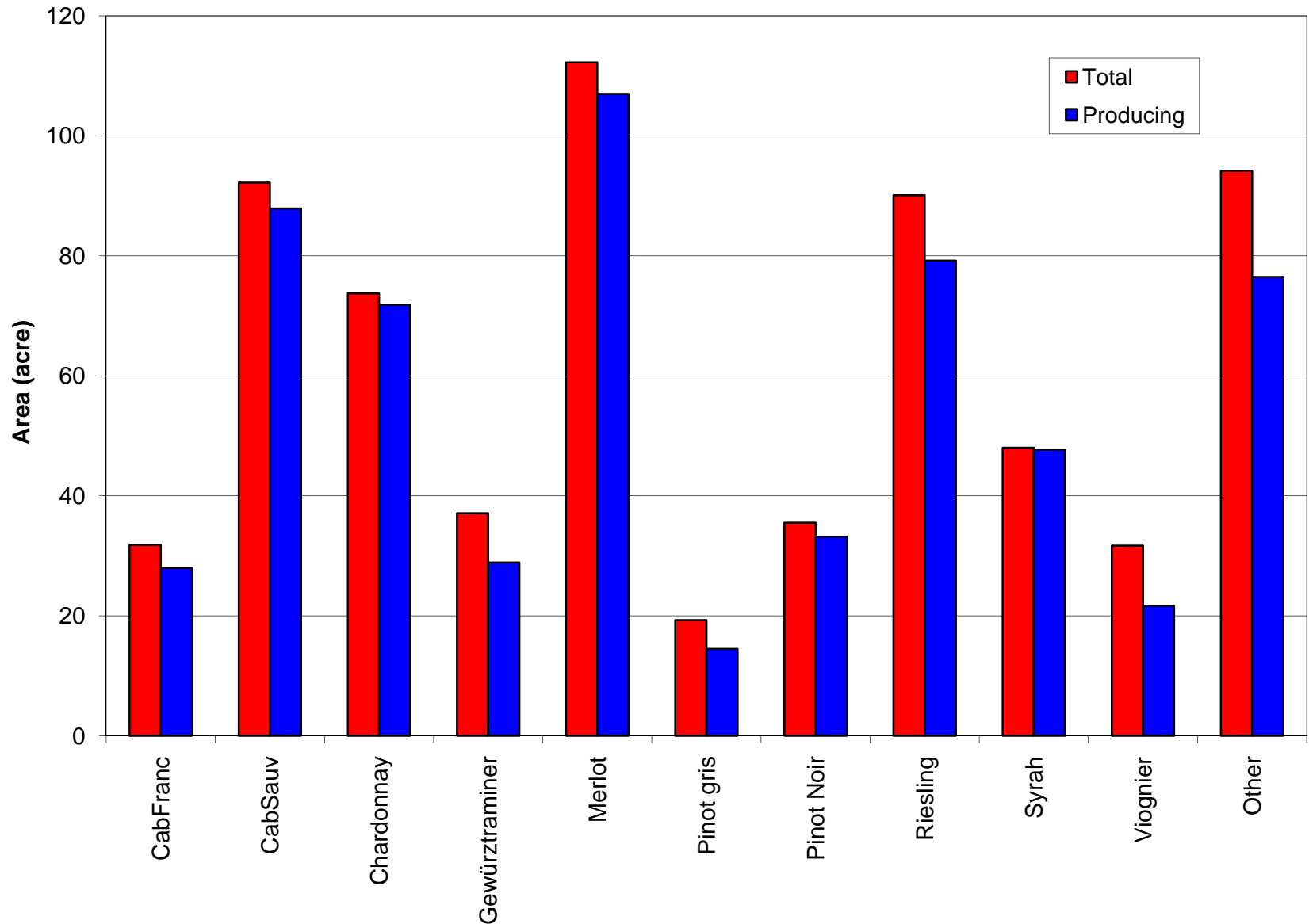
# Colorado grape production by variety



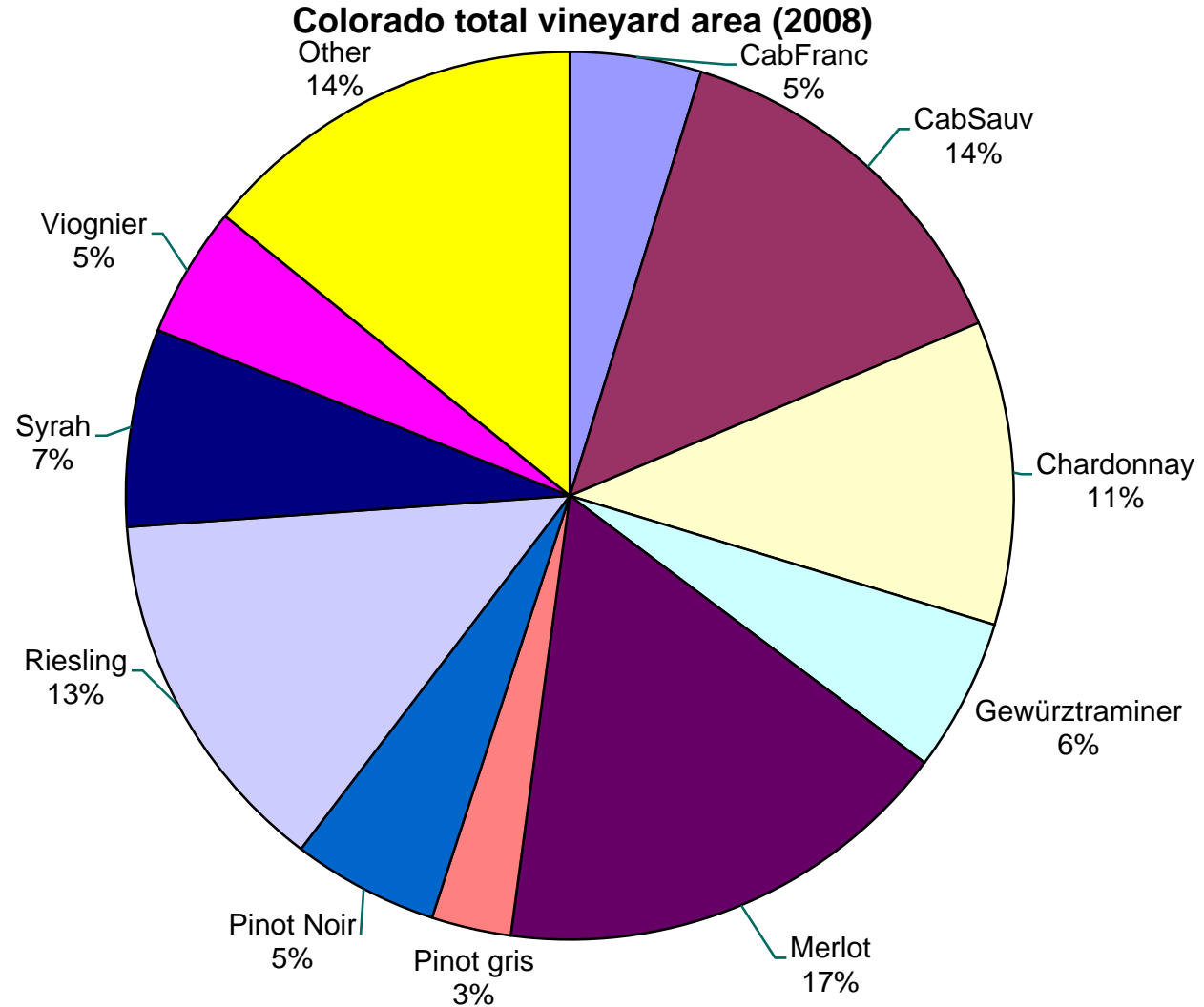
# Colorado grape production by county



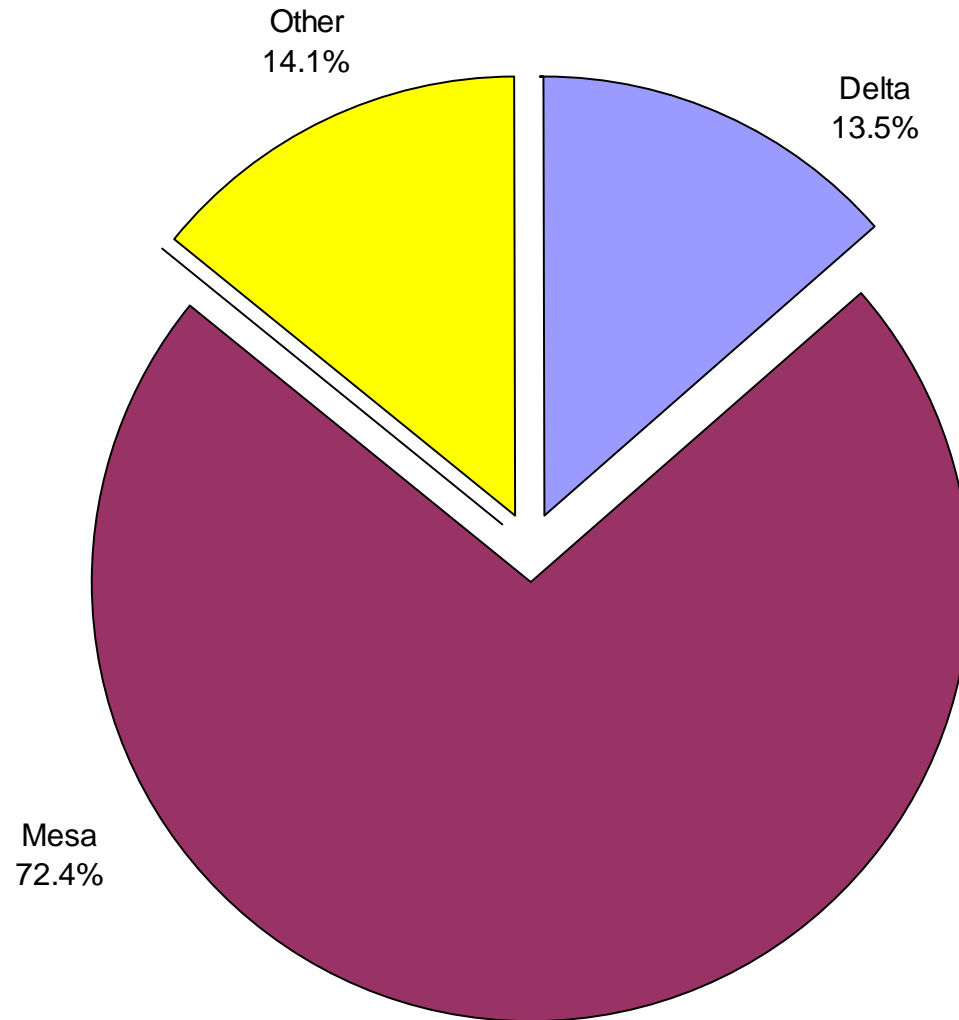
# Colorado grape growing area by variety



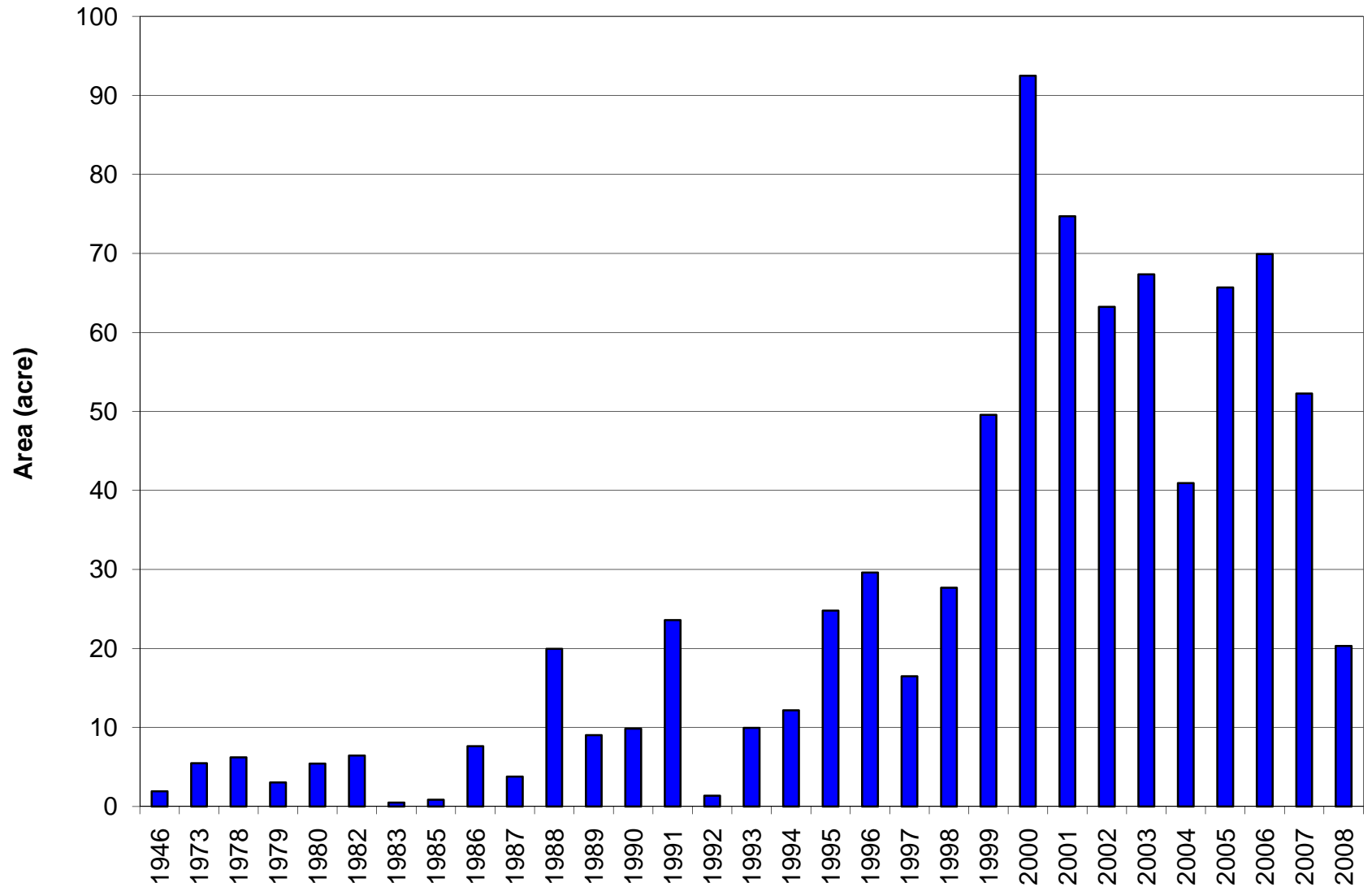
# Colorado grape growing area by variety



# Colorado total vineyard area by county

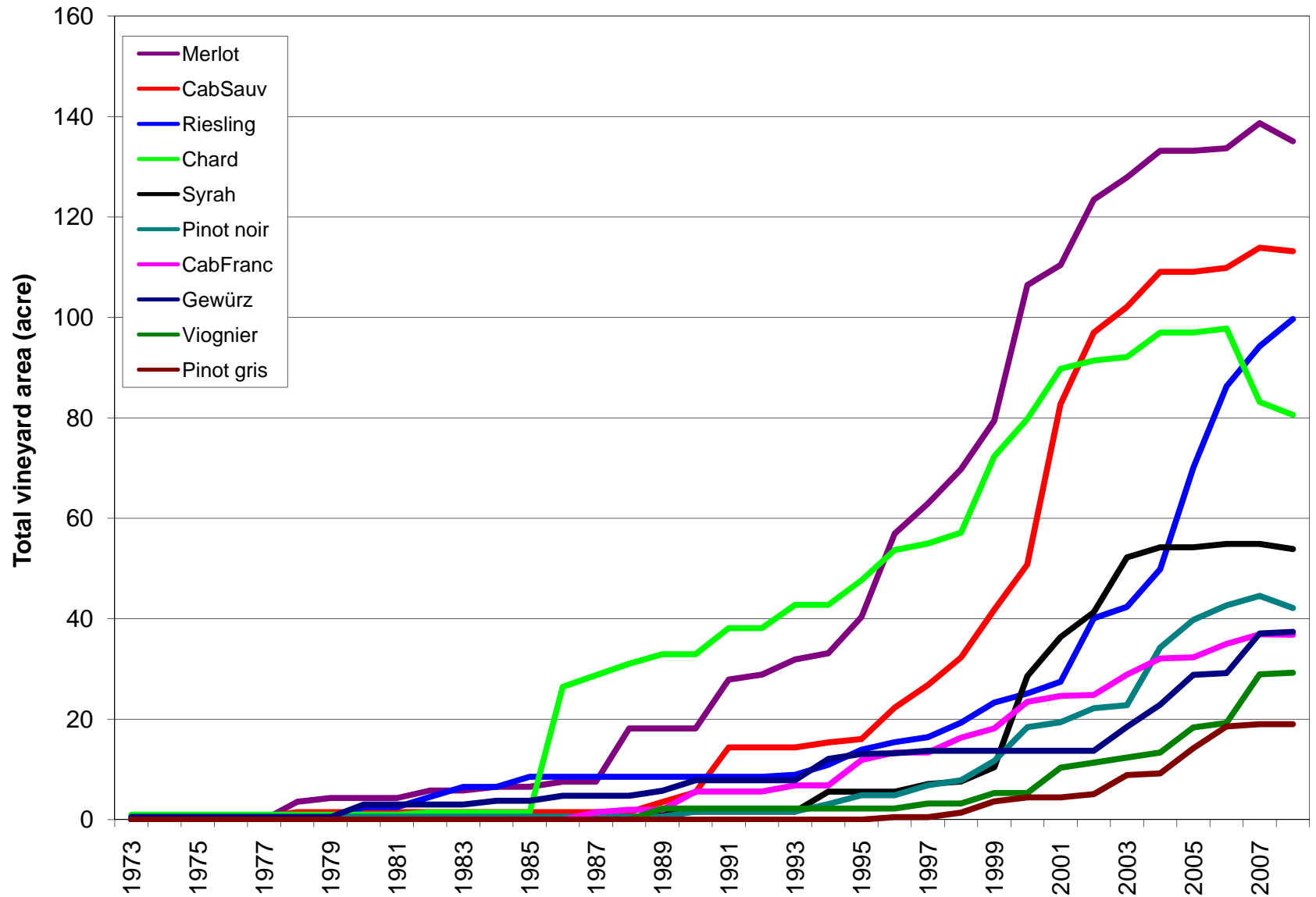


# Colorado vineyards by planting year



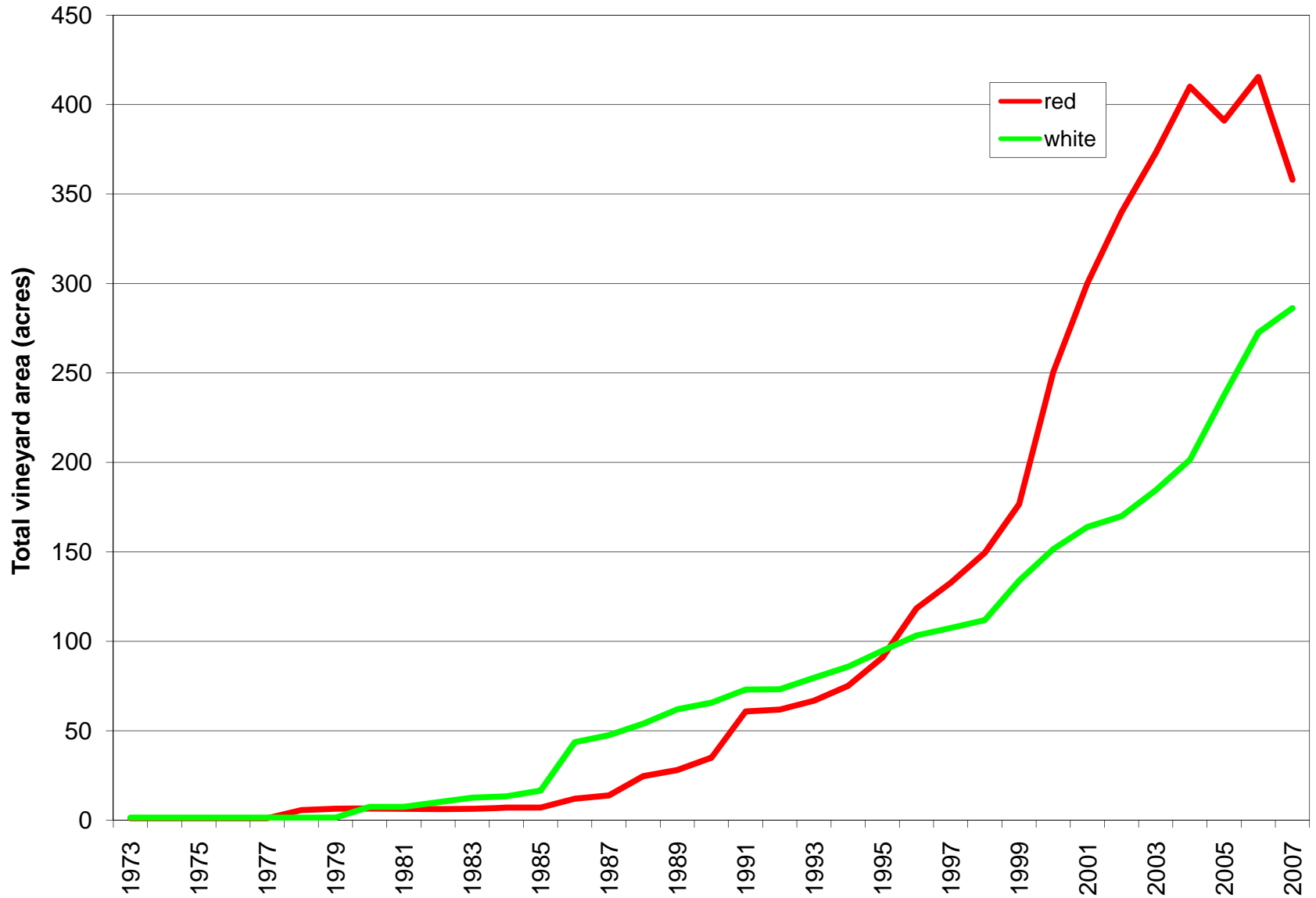
Best guess; based on all surveys since 2000

# Colorado vineyard area, top 10 varieties

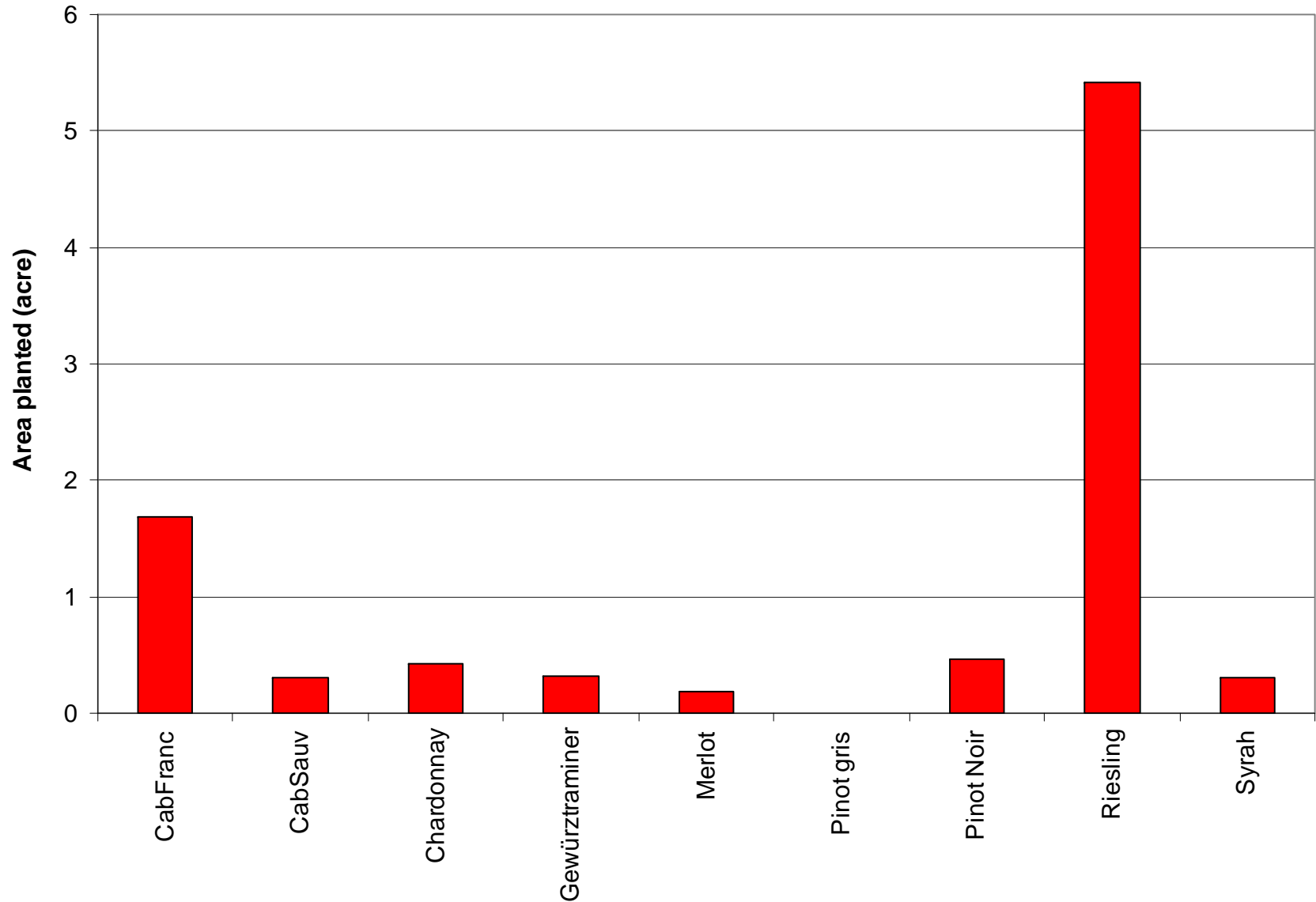


Best guess; based on all surveys since 2000

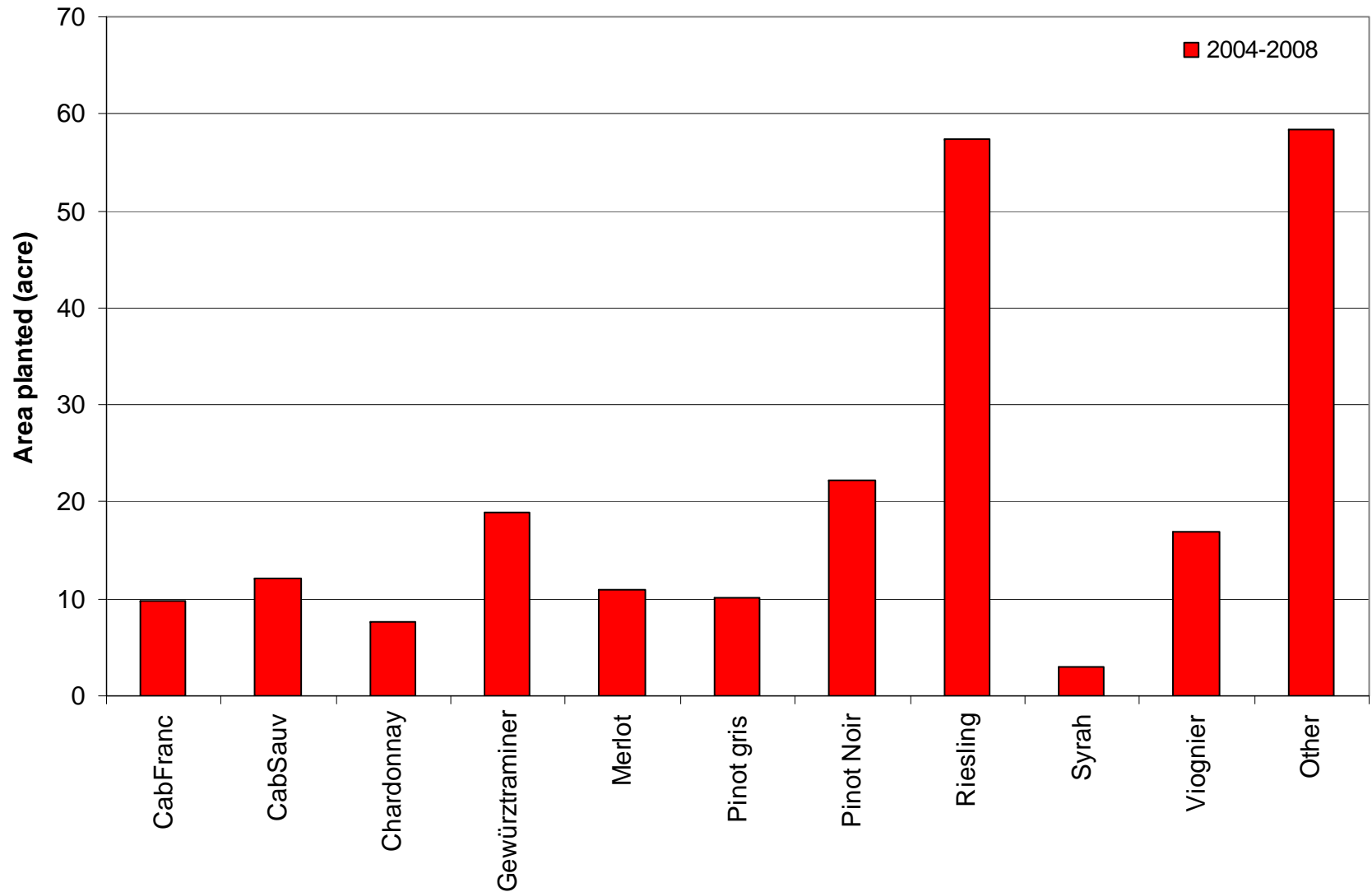
# Colorado wine varieties – red & white



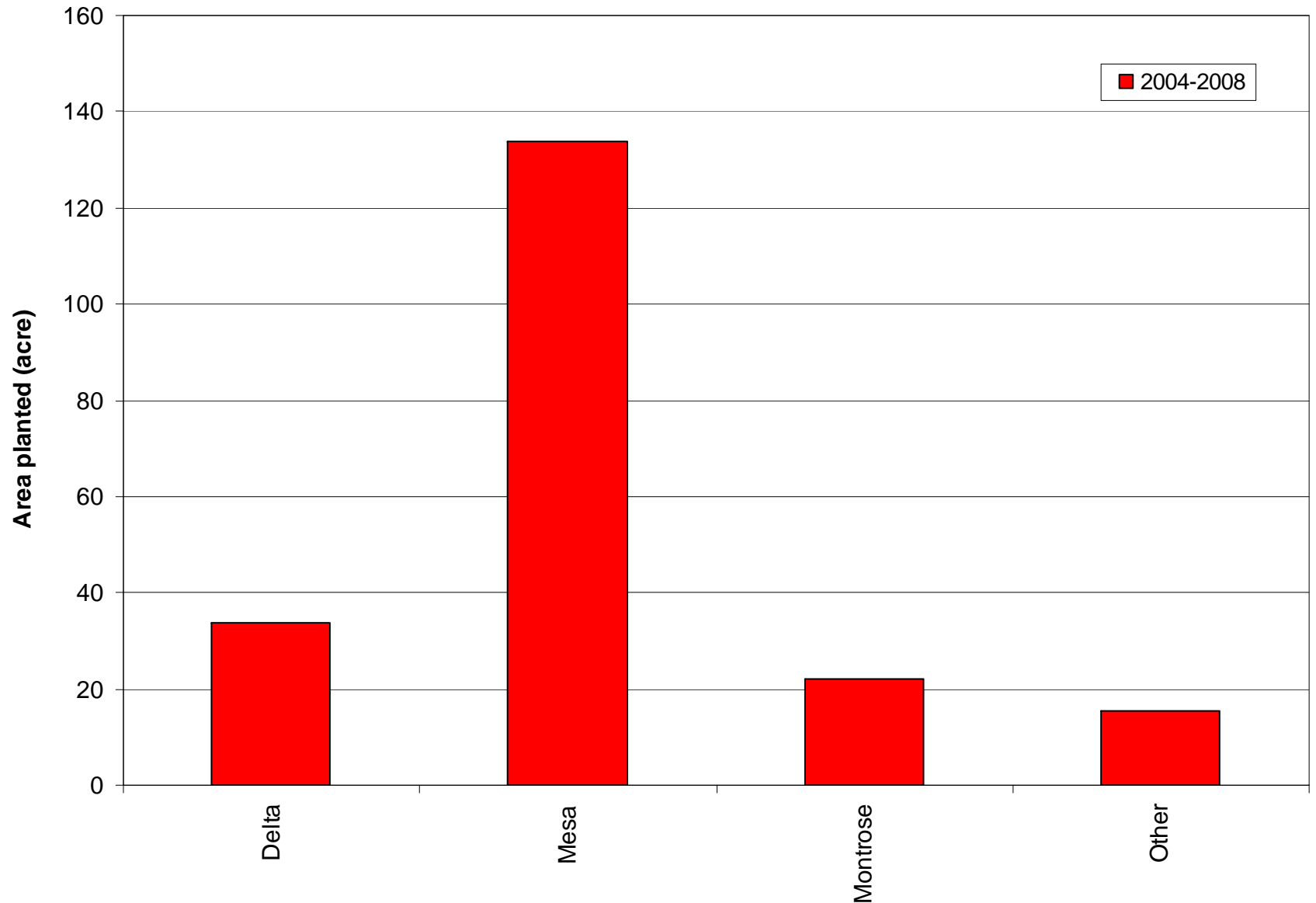
# What has been planted?



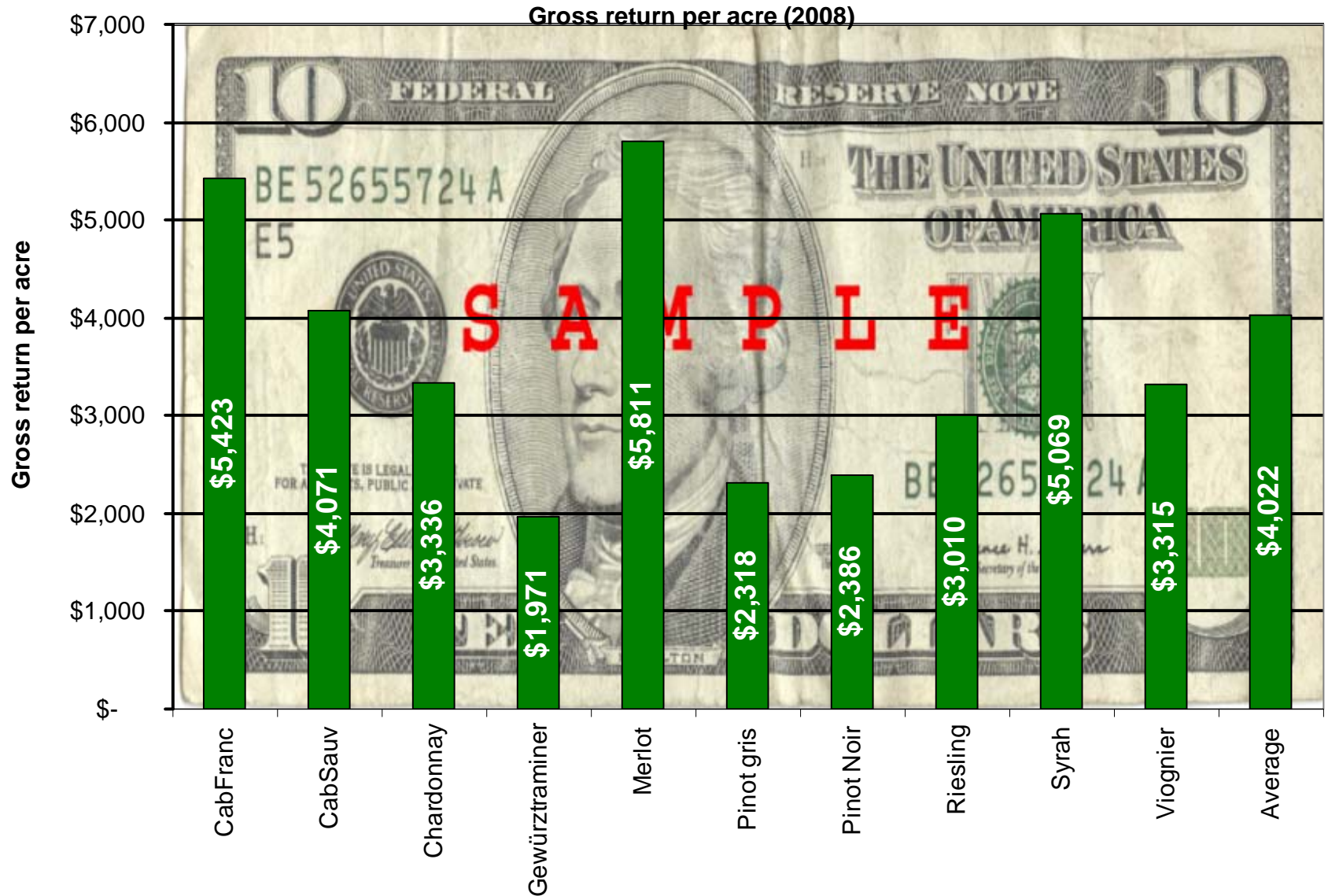
# Total plantings 2004 - 2008



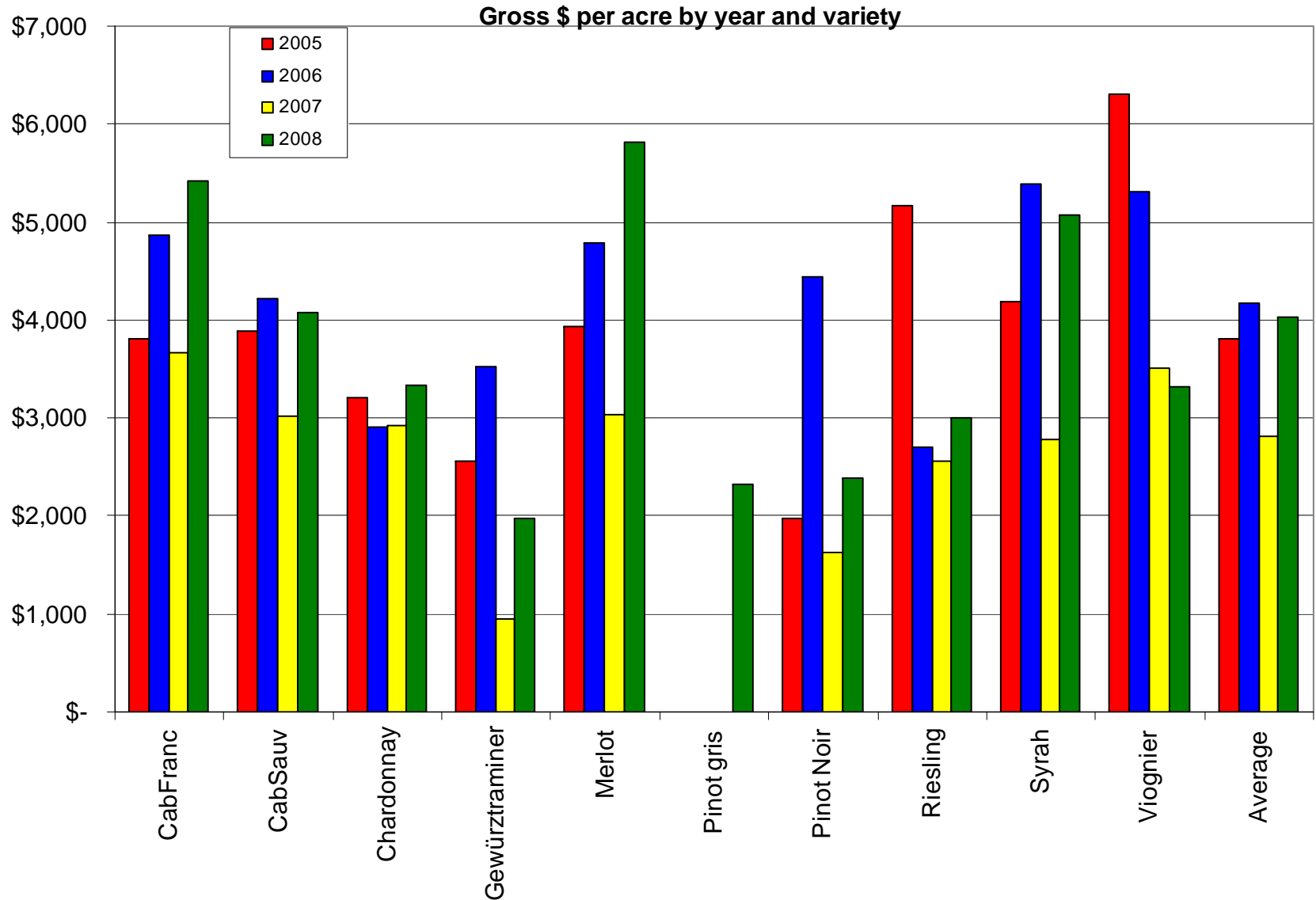
# New vineyard area by county



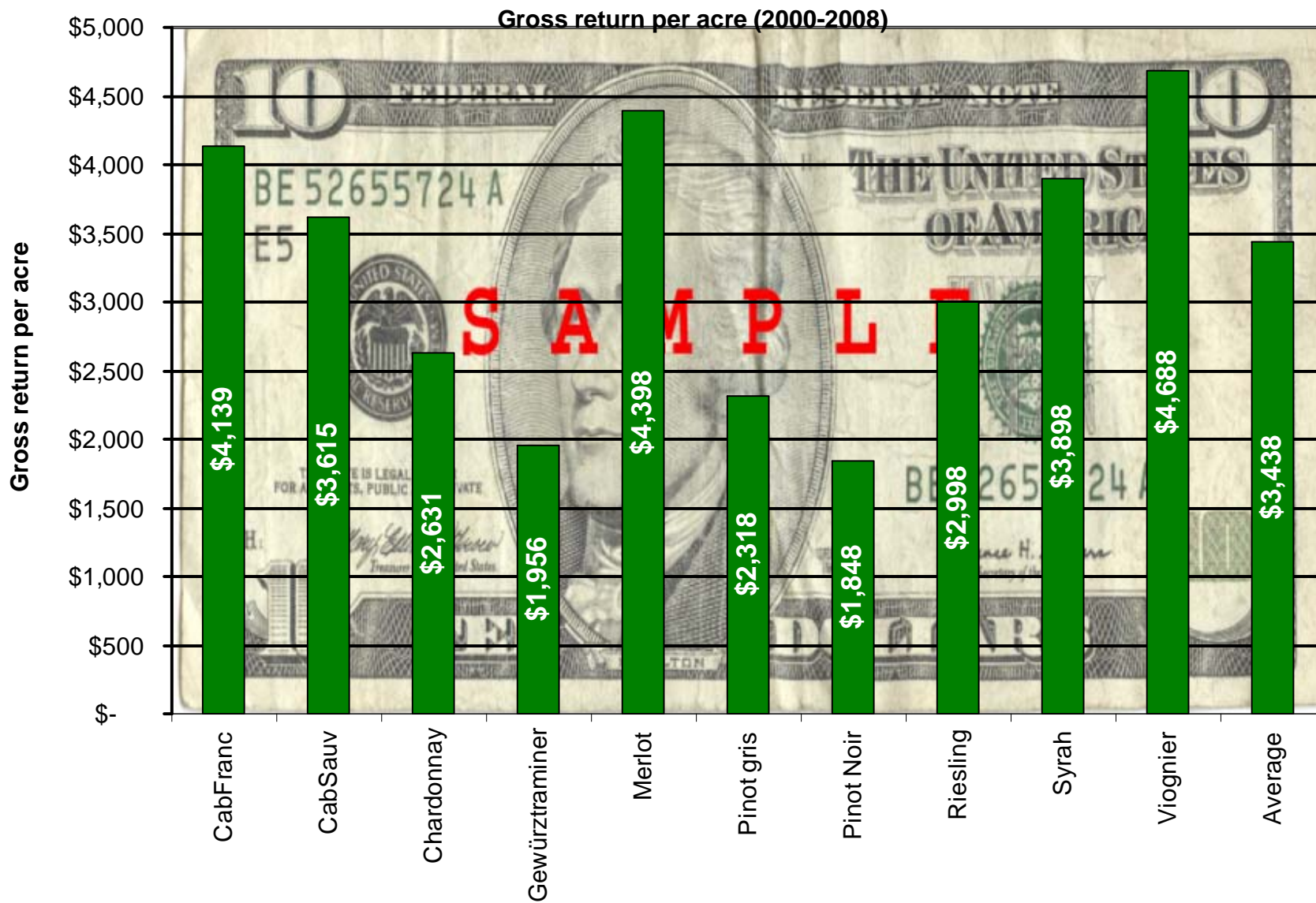
# Gross return per acre, 2008



# Gross return per acre, 2005-2008



# Average gross return per acre, 2000-2008



# “Guesstimate” of Colorado grape growing area

Total vineyard area (acre)	850-900
Wineries	30 %
Growers	70 %
Producing vineyard area (acre)	750-800
Wineries	30 %
Growers	70 %
Average vineyard size (acre)	6.5-7.0

Note: This “guesstimate” was prepared from data provided in the 1999 to 2008 surveys. A number of growers never responded to either of those surveys. Taking into account non-respondents, I estimate a total Colorado vineyard area in 2008 of 850-900 acres.

# Acknowledgements

---

Thanks to

- All growers who responded to the survey
- CWIDB for funding the survey
- Amy Montano, CSU for help with data entry and analysis